



**New Zealand AIDS Foundation**  
Te Tūāpapa Mate Āraikore o Aotearoa

# 2016 Annual Report





# Contents

From NZAF’s Chair .....	2
From NZAF’s Executive Director .....	4
HIV in New Zealand .....	6
Gay and bisexual men .....	6
Heterosexual men and women .....	6
HIV Prevention.....	8
Condoms.....	8
PrEP.....	10
Testing.....	11
Treatment.....	12
Engaging with a Diverse Community.....	13
Takatāpui.....	13
Asian .....	15
Pacific.....	16
African .....	18
People Living with HIV .....	20
Counselling and support .....	21
Peer support and stigma.....	21
Research and Science .....	22
Key changes in science.....	22
Sharing Knowledge.....	23
Organisational Strength.....	24
Collaboration .....	24
Governance and guidance.....	24
Our culture.....	24
Volunteers and community support .....	25
Fundraising and Financials.....	25

# From NZAF's Chair

Kia ora koutou

2016 has been a significant year for the New Zealand AIDS Foundation. On behalf of the NZAF Trust Board, I want to thank you for your support over the past year, and hope that you will continue to support our work as we look to the challenges and opportunities that the future brings. New Zealand's HIV story is one of success. We have one of the lowest adult HIV prevalence rates in the world, and we can be very proud of containing rates to very low levels.



However, we cannot be complacent. Diagnoses have risen over the past few years, and 2015 saw a record number of people diagnosed with HIV in New Zealand. Last year, 224 people were diagnosed with HIV, primarily men who have sex with men. This rise in diagnoses is a significant challenge for NZAF and for the communities most affected by HIV.

At the same time, the HIV prevention and care landscape has rapidly evolved. The tools now exist to effectively end the transmission of HIV in New Zealand within the next decade. To make this a reality will require leadership and commitment not only from NZAF, but also from the government, the medical community, the HIV sector and all communities affected by HIV.

NZAF will continue to promote condoms as a primary prevention tool. They have been the centerpiece of our prevention strategy to date, and have been a critical reason why New Zealand's prevalence rate is so low. However, we need to add new tools to the mix. We need to increase HIV testing, not only by NZAF but across the health system, to reduce undiagnosed and late diagnosed HIV. We also need to facilitate immediate access to HIV treatment, which requires Pharmac to remove its CD4 threshold. This has health benefits for people living with HIV, and also helps stop the spread of HIV. And finally, we need to work with a range of partners and stakeholders to ensure that PrEP is available for HIV negative people who do not use condoms.

In addition, our core mission includes supporting people living with HIV. We will continue to focus on HIV stigma and discrimination, develop the support available to people living with HIV, and ensure that we involve people living with HIV in our work.

The past year was also a year of transition for NZAF, as we said farewell to our Executive Director Shaun Robinson after five years in the role. Shaun did an outstanding job leading NZAF from 2011 to 2016, working hard to create an internal environment and external relationships that has positioned the organisation well for the challenges ahead. I wish him every success in his new role as Chief Executive of the Mental Health Foundation.

The Board ran an extensive recruitment process to replace Shaun, which was led by Board member Michael Moore. More than 30 candidates applied for the role, and the Board interviewed 7 candidates before deciding to offer the role to Dr Jason Myers. The Board believes that Jason is well placed to lead NZAF during its next phase, as we promote the goal of ending HIV transmissions within the next decade.

The Trust Board considers it critical that the voices of the many communities affected by HIV and AIDS in New Zealand are heard at a governance level. We have appointed and co-opted members to the Trust Board in order to ensure that we have both the necessary skills and a diversity of views and experience on the Board. The Board has also been well served by its African Advisory Group, Asian Advisory Group and People Living with HIV Advisory Group, and recently formed an Interim Maori Advisory Group. I want to thank the members of all of our advisory groups for their service. I also want to thank in particular the outgoing members of Te Ropu Ki a Tau o Te Waka, who have provided many years of service to the Board and the organisation.

Finally, the cornerstone of NZAF is its membership. Your commitment to the organisation and our goals is critical to the work that we do. Thank you all for your ongoing support and commitment.

**David Friar – Trust Board Chair**

# From NZAF's Executive Director

Kia ora! It is my privilege to introduce the 2016 annual report for the New Zealand AIDS Foundation, my first annual report as the Executive Director.

The NZAF exists to prevent the transmission of HIV and support those people living with HIV, their friends and whanau. I'm delighted to share with you some 2016 highlights as we have worked towards achieving our mission. In HIV prevention, condom promotion through social marketing and community engagement has remained the cornerstone of our work. We distributed over 600,000 condoms and the Love Your Condom team reached over 100,000 people at nearly 200 events. Our African programme distributed over 12000 condoms to people in African communities, the second group most impacted by HIV in New Zealand after gay and bisexual men.



Alongside condoms, we have been working to integrate the other tools we have at our disposal to combat HIV transmission. A test and treat strategy is underpinned by the now clear science that somebody living with HIV has a dramatically reduced chance of passing HIV on if they have achieved viral suppression through effective treatment. To this end, we have reoriented our Health Service to make sure that we are testing the right people in the right places. We also integrated testing promotion into our social marketing and community engagement activities. As a result we tested over 4000 people through our service. In the treatment space, we have continued to advocate for the removal of the threshold that currently exists before people living with HIV can access treatment. The threshold remains in place, contrary to World Health Organisation guidelines and in conflict with all the science based recommendations for immediate treatment access. We will continue our fight on this issue.

Finally, we have begun a work programme to integrate pre-exposure prophylaxis into our strategy. PrEP is the use of HIV medication by people who are HIV negative to reduce their risk of infection. For people at high risk of HIV who struggle with condom use, PrEP is a highly effective new tool at our disposal. We have collaborated with Auckland Sexual Health and the Auckland District Health Board to develop a study exploring how PrEP could work in the New Zealand context. We have also collaborated with a range of stakeholders including the New Zealand Sexual Health Society, Medical Protection Society, clinicians, lawyers and community stakeholders to facilitate development of effective pathways to access generic medicines for use as PrEP.

Supporting people living with HIV, their friends and whanau is the second core part of our mission and this year we had over 1000 interactions with HIV positive people across New Zealand. This support included one-on-one counselling, education and the provision of a range of group support settings. Our 'more than HIV' video series, aimed at combatting HIV stigma, has had over 15000 views in the last 12 months. Finally, we worked in a number of collaborative efforts with peer organisations to deliver care and support.

Moving forward, let us make no mistake. We are at a critical junction in this country's response to HIV. At a time when the tools now exist to eradicate HIV infection in New Zealand we are facing the highest numbers of annual infections the country has ever seen. Ending HIV transmission is an aspirational goal but I am 100% convinced that it is also a realistic one.

We are about to launch a new strategic plan that I think places the NZAF as true leaders of the HIV response moving forward but we will not get the job done alone. Success will depend on urgent and renewed political support and political leadership. It will require new and more sophisticated partnerships and collaborations as we aim to make the most of all of the tools that we have available. And it will take you! NZAF is only as strong as its Board, staff, members, volunteers and supporters. I thank you for your support and I look forward to working with you.

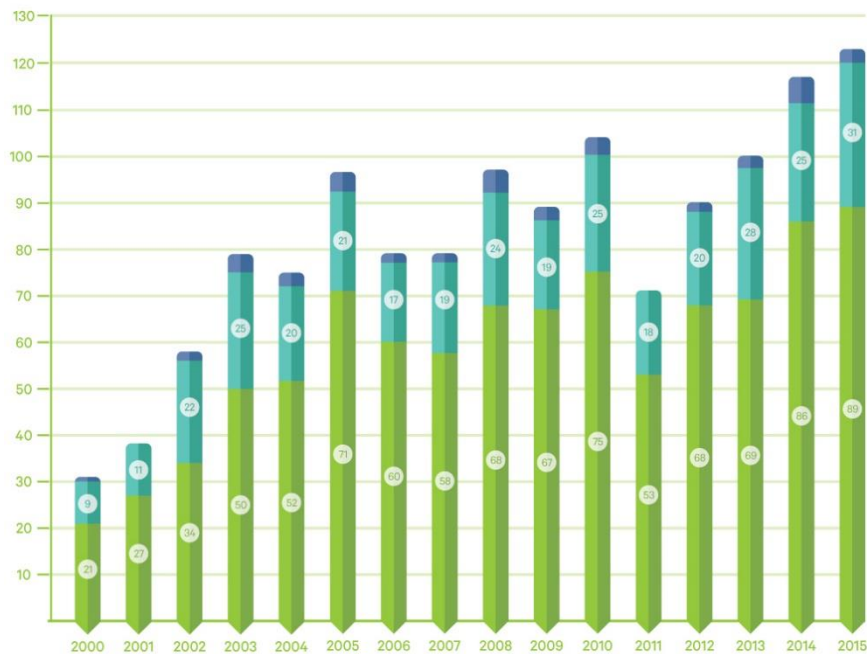
**Dr. Jason Myers – Executive Director**

# HIV in New Zealand

In 2015, 224 people were diagnosed with HIV in New Zealand. 2015 is the fourth consecutive year that the number of gay and bisexual men diagnosed with HIV has increased.

## Gay and bisexual men

Of the 224 HIV diagnoses in 2015, 153 were amongst gay, bisexual and other men who have sex with men in New Zealand. The increasing diagnoses for gay and bisexual men is concerning. It points to a clear need for more action in using every tool available in ending HIV through continued use of condoms, targeted use of PrEP, more testing and the removal of the CD4 threshold so people are able to access treatment early. It is also a reminder to all gay and bisexual men that HIV is still a big issue in our community and we need to continue to work together to end new transmissions.



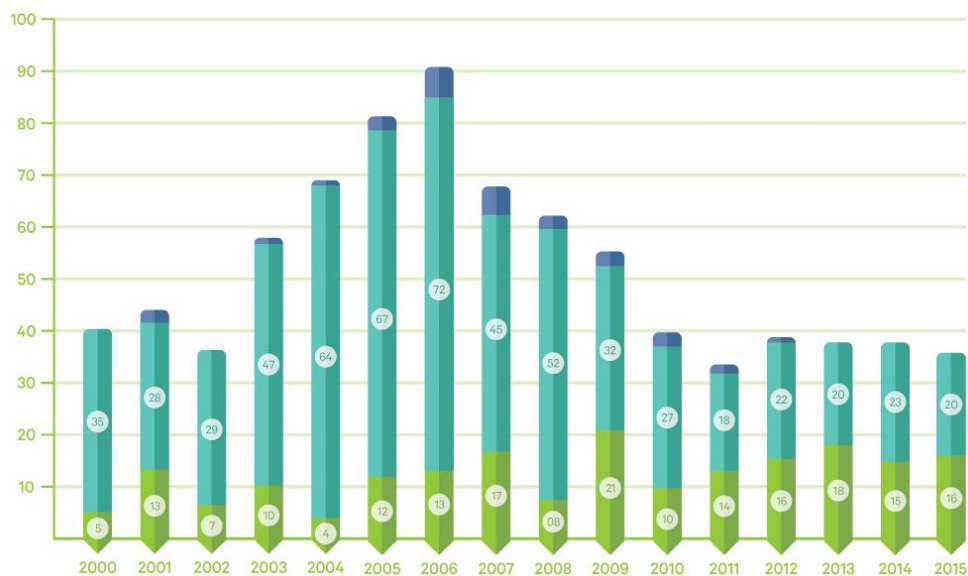
### Infographic Key

- Place of infection unknown
- Infected overseas
- Infected in New Zealand






## Heterosexual men and women

There is an overall downward trend in HIV diagnosis among heterosexual New Zealanders since 2006. In 2015, 42 people (25 men and 17 women) were infected through heterosexual contact. Of these, 16 were infected in New Zealand.



### Infographic Key

-  Place of infection unknown
-  Infected overseas
-  Infected in New Zealand



# HIV Prevention

NZAF has continued to consolidate analysis of key scientific developments in our HIV prevention strategy. Recent scientific breakthroughs, supported by real-world evidence, demonstrate that treatment-based prevention can complement existing condom promotion efforts to drive down new HIV infections in the Country.

## Condoms



Condoms are central to the NZAF's HIV prevention strategy. They provide a barrier that HIV cannot pass through and, as such, work effectively to prevent HIV transmission during sex. They are also incredibly cheap and easily accessible in New Zealand. Evidence shows that gay and bisexual men and the African community, two population groups most at risk of HIV, continue to positively engage with condoms through Love Your Condom (LYC) and Love Cover Protect (LCP). Over the last year along with continuing to keep condom promotion at very high levels, LYC and NZAF have focused particularly on reaching young people and highly sexualised men. LCP has continued to engage with members of the African community with a high level of collaboration with key community partners.

- 600,000 free condoms were distributed
- LYC had over 40,000 social media followers and a reach of over 170,000
- LYC's website – [www.loveyourcondom.co.nz](http://www.loveyourcondom.co.nz) - attracted 405,000 unique visitors and over 1,000,000 page views
- LYC advertising impressions (print, online and outdoor) totaled over 45,000,000
- In August 2015 we published the "How to Put on a Condom" video on YouTube. Since then, it has had over 2.7 million views
- Each week on average there were 4,030 interactions with LYC on Facebook.
- LYC participated in a total of 199 events targeting gay and bisexual men and where approximately 107,000 people attended
- 12,000 people attended LYC Big Gay Out in Auckland where 10,000 LYC condoms were distributed
- 288 gay and bisexual men attended our educational workshop series, 'Ass Class' and 'HIV 101'. Feedback from attendees was encouraging with 90% reporting to have learnt something new

- A new LYC youth resource has been developed in collaboration with sexual health educators to teach young gay and bisexual men in school about HIV risk and safe sex
- LCP engaged with 22,561 people through events, workshops and HIV education sessions targeting African communities
- LCP distributed 12,776 condoms among African communities



## PrEP



Pre-exposure prophylaxis or PrEP refers to the use of HIV medication by people who are HIV-negative in order to reduce their risk of HIV infection. For gay and bisexual men who struggle to maintain consistent condom-use for anal sex, PrEP offers a new way to reduce the risk of infection. We believe that PrEP – if implemented as part of a combination prevention strategy that includes sustained condom-use, increased testing and early treatment of HIV – can reduce the number of new HIV infections acquired in New Zealand and we are committed to advocating for it to be made available to those who need it.

- NZAF advocated for inclusion of PrEP in the Ministry of Health Sexual and Reproductive Health Action Plan
- NZAF has collaborated with a range of stakeholders including the New Zealand Sexual Health Society, Medical Protection Society, clinicians, lawyers and community stakeholders to facilitate development of safe pathways to access generic medicines for use as PrEP
- NZAF published updated educational resources about PrEP on the NZAF website that were accessed by 2,300 people
- NZAF commissioned research to measure the number of gay and bisexual men in New Zealand would be interested in using PrEP. We are seeking funding to combine this information with existing data to model what impact PrEP could have on reducing rates of HIV infection. This would be used to develop a business case that shows how funding PrEP can deliver long-term savings to the New Zealand health system
- NZAF briefed MoH officials in two separate meetings (Auckland and Wellington) regarding implications of new science around test and treat and PrEP as additional prevention strategies alongside condom promotion, the new WHO policies in relation to these issues, and their implications for the NZ HIV epidemic.



## Testing



Early testing and diagnosis of HIV combined with early access to treatment can positively impact the health and wellbeing of people living with HIV as well as significantly reduce the risk of onward HIV transmission. Research conducted in 2011 found that among gay and bisexual men in Auckland who are living with HIV, one in five (21 per cent) did not know they had the virus. An estimated 600 New Zealanders are currently living with undiagnosed HIV. As New Zealand's HIV epidemic is relatively contained, a strategy of eliminating undiagnosed HIV through increased testing and then providing immediate treatment to reduce onward transmission is practical, achievable, and affordable. We continue to build on the success of our first National HIV Testing Month in 2015. Our testing service works to ensure that social norms within gay and bisexual men's networks support testing in a variety of settings and ways. Within our service we have made some changes to increase the capacity for testing with a goal to increase annual testing numbers to more than 5000 per year through our services by the end of 2018.



- 4,189 HIV tests were provided through the NZAF Health Service. 26 new HIV diagnoses were identified through testing carried out at NZAF
- The National HIV Testing Month campaign was repeated in May 2016. 276 gay and bisexual men were tested for HIV during the campaign month, an increase of 27% on the monthly average
- 3,992 Syphilis tests were administered. 31 new Syphilis diagnoses identified through testing carried out at NZAF
- 2,108 Gonorrhoea and Chlamydia self-tests were undertaken in partnership with sexual health services in Auckland, Wellington and Christchurch
- In collaboration with Positive Women Inc., NZAF is piloting the provision of a cervical screening programme
- NZAF has developed peer testing and provided training to external providers to perform the HIV rapid test

## Treatment

Scientific evidence and WHO guidelines show that immediate treatment following HIV diagnosis leads to the best possible long-term clinical outcomes for people living with HIV. We also know that a person living with HIV who is taking medication, resulting in an undetectable viral load, has a substantially reduced risk of passing HIV to sexual partners. Currently, the CD4 threshold for treatment access in New Zealand means that it is not possible for people diagnosed with HIV to access funded treatment until their CD4 count drops below 500. To be able to provide the best possible care and support to People Living with HIV (PLWHIV) and to gain the additional prevention benefit of suppressed HIV viral load, we continue to advocate for the removal of the CD4 threshold in this country.

- We built a strong case for the removal of the CD4 threshold for treatment access and presented this to Pharmac
- We collaborated with clinicians and met with the Minister of Health to make the case for immediate access to treatment for people diagnosed with HIV
- We collaborated on the development of the Ministry of Health's Sexual and Reproductive Health Action Plan

# Engaging with a Diverse Community

Engaging with communities most at risk of HIV is central to achieving our goal of ending HIV. Our community engagement team nurtures our relationship with individuals, other organisations, venues and volunteers. This way, we are able to communicate the HIV prevention message and raise awareness of HIV in the diverse cultural and ethnic communities we serve.

## Takatāpui



Of the 153 gay and bisexual men who were newly diagnosed with HIV in New Zealand in 2015, 13 (or 9%) reported their ethnicity as Māori, consistent with the average for 2011-2015 (according to data from the AIDS Epidemiology Group). Overall, a majority of the HIV diagnoses are among Māori takatāpui. Māori women are over-represented among heterosexually acquired HIV diagnoses among women, compared to other ethnicities. Compared to other ethnicities, there is a larger proportion of late HIV diagnoses among Māori, with a higher number of takatāpui presenting with a CD4 count of less than 200. Māori takatāpui report less recent HIV testing compared to gay and bisexual men who identify as European. We work with takatāpui stakeholders around Aotearoa to reach out to the people who can support, influence and enable takatāpui in a culturally appropriate way to prevent HIV. With ongoing guidance and leadership from the Kaiārahi, Māori Community Engagement Coordinator and Social Marketing Coordinator Māori, we continue to support a bicultural environment.



## **‘Takatāpui’ – a book that tells the untold story of Māori sexual and gender diverse identities**

‘Takatāpui’ is an important milestone in our ongoing engagement with Māori in building a resilient community and the Foundation’s goal of working in partnership with our communities to prevent HIV. NZAF has led the development of this resource. Dedicated to the life and stories of ‘takatāpui’ — Māori sexual and gender diverse identities, this book links to a vibrant present where takatāpui can claim recognition, equality and a better future and find the place of standing that is integral to Māori identity. A collection of narratives, this resource aims to raise awareness and understanding of HIV in the community and will be launched at the Hui Takatāpui 2016. This resource was completed under the direction of NZAF’s Programme Manager Community Engagement / Kaiārahi. A collective effort, its completion is thanks to many community leaders and members, researchers, editors, translators and photographers. Without their tautoko and manaakitanga, these stories would have remained untold. The book follows the progress of the community from the years of oppression before the 1986 Homosexual Law Reform Act and the backlash from Māori communities that followed, through the dark times of the AIDS epidemic to the present day. Thirty years on from that law reform, there is still much to do, but also much to celebrate.



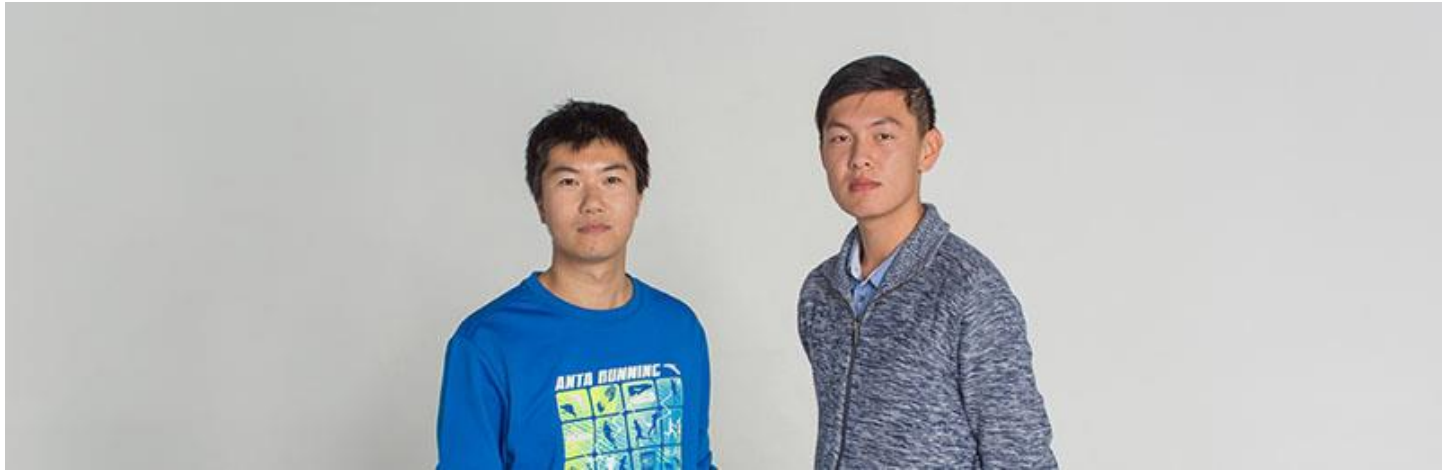
### **Hui Takatāpui 2016 – planning and preparation**

Every second year, our Love Your Condom (LYC) team help facilitate Hui Takatāpui. This year Hui Takatāpui, to be held in November 2016, will celebrate its 30th anniversary and this coincides with the same year Aotearoa celebrates 30 years since the Homosexual Law Reform Act was passed. Over the last few months, we have invested time working with the takatāpui community for planning and preparation of this significant event. The theme for Hui Takatāpui 2016 is Tū Mai Te Tūrangawaewae - The Place to Stand.

- 8 LYC champions were recruited for the Hui Takatāpui Komiti Whakahaere (organising committee)
- In the past year, the NZAF board has developed a Māori Standing Committee and have formed an Interim Maori Advisory Group to advise the Board.
- Community outreach and collaborative work continues at events that promoted health and wellbeing for Takatāpui and Maori such as Maori Caucus Hui, Te Tai Rawhiti Health (Health day Expo), Hauti Hauora Rhythm in Vines Festival, Horowhenua Health Centre and Koriri Marae Health and Social Services



## Asian



The proportion of gay and bisexual men diagnosed with HIV who identify as Asian has increased over the last decade, and in 2015 was 13%. Since 2005, the Asian population in New Zealand has doubled due to immigration and this reflects in the epidemiological trend of increasing HIV diagnoses in this population group. Our efforts to engage with Asian gay and bisexual men were focused on collaboration and building relationships with community organisations so that they are empowered with knowledge of sexual health and HIV. Since the role of the Asian Community Engagement Coordinator was established in 2015, there has been increasing involvement of gay and bisexual men who identify as Asian with NZAF's work. Their increasing presence is seen in the visuals of our campaigns and resources, website and online blogs, and volunteers from the community at events and condom packing. We have actively worked towards forming an Asian Advisory Group to ensure diverse Asian voices are informing our work.

- A total of 875 Asian gay and bisexual men were engaged through community events and outreach efforts like workshops, focus group discussions, socials, festivals and university events
- LYC has begun working with various groups in the community: Auckland Feathers, EquAsian, The Asian Network, and Chinese Social Worker Student Association. This has increased LYC's visibility amongst Asian gay and bisexual men and raised LYC's acceptability in the Asian community where sex and homosexuality are often considered taboo subjects
- A focus group with 21 Asian gay and bisexual men was carried out to understand their testing and condom use behaviour. The findings were analysed and incorporated into our testing promotion
- LYC has a Wechat group with over 50 Chinese gay and bisexual men from Auckland and over 1000 messages exchanged daily. The messages range from neutral and social to dating related conversations. We have opportunities to integrate safe sex communication in these conversations as well as promote condoms

## Pacific



In New Zealand, of the 153 gay and bisexual men who were newly diagnosed with HIV in 2015, 5 (or 3%) were from the Pasifika LGBTQI+ community (according to data from the AIDS Epidemiology Group). Findings from the 2014 Gay Auckland Periodic Sex Survey (GAPSS) and Gay men's Online Sex Survey (GOSS) show that Pacific gay and bisexual men from the Pasifika LGBTQI+ community are less likely to report ever testing for HIV compared to gay and bisexual men who identify as European. Through education, improved access to testing services and clinical support for the Pasifika LGBTQI+ community, we continue to address barriers to testing, mainly HIV stigma. We have been able to reach key Pasifika LGBTI+ audiences through live events which have an attending audience of 350 – 400 people, creative engagements where we reach between 100 – 150 people and workshops which have a more concentrated focus of smaller groups of 30 -50 people. Other areas of work to raise awareness and education have included sponsorship of Pacific initiatives and programmes. As a result, visibility of LYC has reached broader audiences of varying ages and Pacific cultures.

### Love Life Fono 2015



The Love Life Fono (LLF) 2015 celebrated its ten year anniversary as the largest Pasifika LGBTQI gathering hosted in New Zealand. NZAF has maintained an integral role in nurturing this community space as a key community partner. LYC delivered our HIV prevention programmes at the Love Life Fono 2015 and also supported partner organisations in working closely with the Pasifika LGBTI+ community through a dynamic programme of workshops, public forums, cultural exchanges and community networking opportunities. LYC's visibility and engagement was articulated through custom resources and on site clinical services that were made available to registered attendees. This was complemented with our HIV101 and Pasifika Arse Class education programmes. Love Life Fono 2015 had 150 registered attendees and an additional 50 attended the workshops over the 3 days that the event was running. Feedback shows that we successfully created a safe space for the community to connect and unpack their issues, aspirations and unique perspectives and to set goals and actions for the future. Designed as an engagement tool for HIV prevention the scope of this conference has grown parallel to the potential and aspirations of the community it serves. This space was held in partnership with wider health services that also offered instant access to service and support.

- Ongoing engagement and community development through outreach and a host of events including support for AUT - Pacific Student Support Services, FAFSWAG workshop series and Southside Condom Packing at Youthline Manukau
- Love Your Condom (LYC) has partnered with FAFSWAG in various capacities that have allowed our key messages to reach their unique audience of young Pasifika LGBTI+ adults. FAFSWAG is a brand that celebrates and documents emerging Queer Pacific Culture in New Zealand. The sponsorship of their live events meant that our campaign reached our target audience and the message underpinned multiple activations and gatherings hosted by FAFSWAG.
- A host of opportunities over the last 12 months has seen engagement with the Pasifika LGBTI+ community through art. These events were chosen because of their popularity in the communities we serve:
  - The Sound of the Ocean presented at TSB James Wallace Estate, Pah Homestead during the 2016 Auckland PRIDE Festival
  - Rereading the Rainbow - Queer art exhibition delivered by the Faculty of Creative Arts M.I.T. Featuring Pacific artist and curated by Steve Lovette at RM Gallery.
- LYC has been involved in planning for Pasifika PRIDE events as well as presenting at international conferences related to the Pasifika LGBTQI+ community.

## African



Among all heterosexual men and women diagnosed with HIV in New Zealand, Africans remain over-represented. Of the 109 people infected with HIV in New Zealand in 2015, 16 were heterosexual men and women. Over the last few years, the annual number of heterosexual men and women infected in New Zealand has remained just a little under the number infected overseas. NZAF's Love Cover Protect (LCP) programme continues to engage with New Zealand's African communities through social marketing initiatives. LCP was able to reach 22 561 people (11,399 female and 11,162 male) who attended community events, workshops and HIV education sessions. Condom promotion has been maintained at a high level and our focus has been on testing and supporting people to access treatment and care. LCP works closely with partners and collaborators to achieve its strategy.

- LCP distributed 12,766 condoms in the African community
- Over 7 000 people have been engaged via social media
- The LCP Facebook page has 3,593 followers
- [www.lovecoverprotect.co.nz](http://www.lovecoverprotect.co.nz) registered 5,890 unique page views. Online advertising is paying off with increasing reach and scope of LCP's social media and website assets
- LCP participated in 114 community events, 223 community meeting and 90 service provider meetings
- 5 Youth workshops were held with a total of 59 (49 female and 10 male) young people participated
- 11 workshops for 'Train –the-Trainer' were held. 22 Community Educators (12 female and 10 male) were trained and supported. This accounted for 75% increase in the number of trainees
- 41 Community Education sessions for adults were held and 8 community educators (5 female and 3 male) were trained and supported
- A qualified social worker from the African community has completed their peer HIV testing training conducted by NZAF
- New resources were developed with refreshed t-shirt designs and condom packs featuring the LCP branding. 407 Love Cover Protect t-shirt and 715 'Get Informed & Involved' brochures and testing cards were distributed in the community.
- The LCP African Youth Talent Show (AYTS) was held in Hamilton in April 2016. The opening ceremony was blessed by the local Kaumatua and attended by Hamilton-based NZAF African Advisory Group member (Marlene Williams)



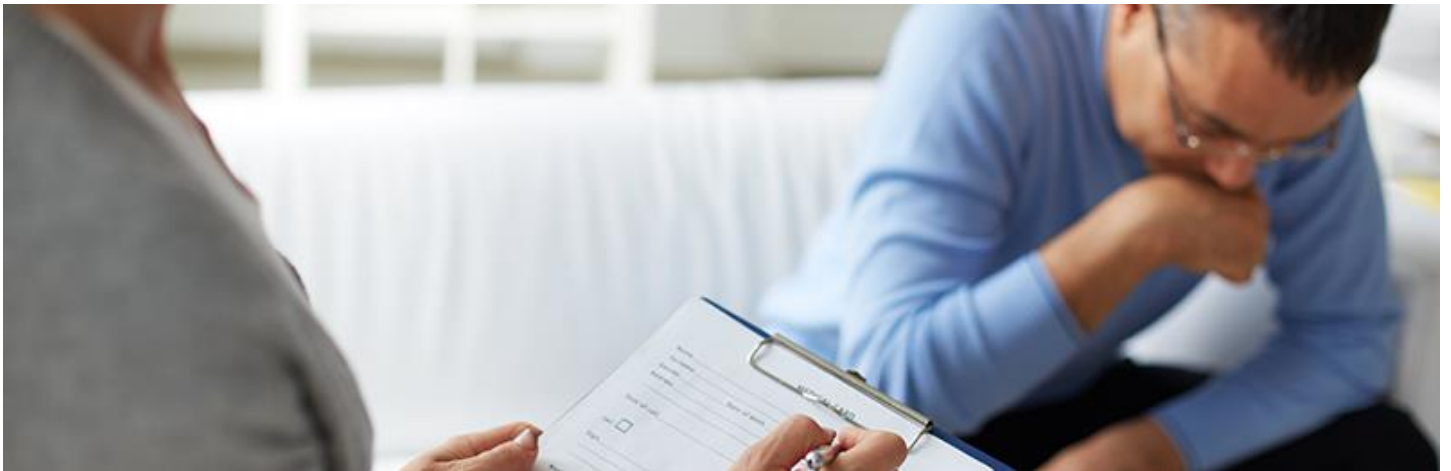


LCP has significantly increased and deepened connections in the African community. A strategic planning exercise has resulted in a refined approach to the programme in the coming year. The African Advisory Group continues to assist and play a pivotal role in the programme. LCP continues to take into account some of the findings, recommendations and conclusions of the AfricaNZ research.

# People Living with HIV

Supporting people living with HIV is central to NZAF's work. We provide counselling and support services to people living with HIV and anyone affected by the epidemic in New Zealand. We also collaborate with peer support organisations and advocate for effective policy and stigma reduction.

## Counselling and Support



NZAF is committed to providing services and support to people living with HIV, their whanau and families each year. Our staff provides counselling and support through one on one client appointments and facilitated peer support groups for people living with HIV. On many occasions, we work collaboratively with organisations such as Body Positive, Positive Women and INA in providing people affected with HIV the support and care they need.

- Approximately 1000 HIV positive client interactions were provided
- Health information is provided via a range of mediums such as one to one engagement, groups, seminars, web and hard collateral
- Our staff are updated on current best practices and the about the health and support needs of people living with HIV to ensure that professional and high-quality community service is provided
- The NZAF Health Services team have attended the Goodfellow Symposium and the GP Conference to provide information to GP's regarding the services offered at NZAF and to promote HIV testing
- NZAF collaborated with Infectious Diseases physicians, sexual and public health services (Sexual Health Services in Auckland, Wellington and Christchurch), organizations associated with HIV medication issues and other relevant providers

## Peer support and stigma



Stigma and isolation are two of the major issues that people living with HIV continue to face. Discrimination comes in many forms and can occur in spaces as diverse as healthcare settings, workplaces and relationships. NZAF has continued to provide support and information in this area both to people living with HIV and organisations who work with them.

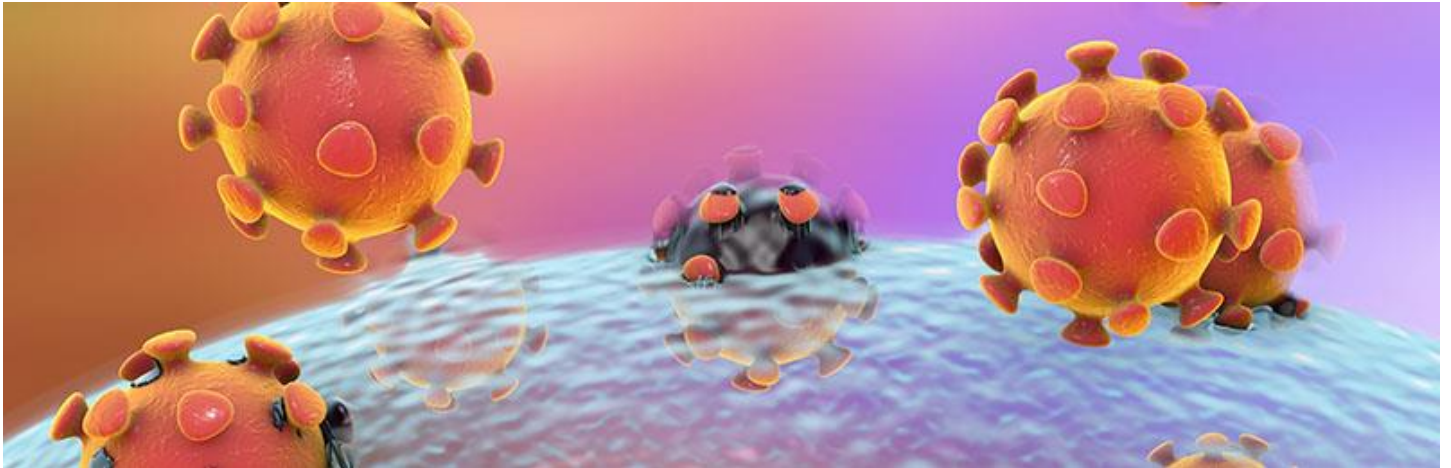
- NZAF provided educational workshops to healthcare organisations and groups in regards to HIV and stigma including the NZ Blood Service, Allied Health Professional and Medical Students
- NZAF provided support to people living with HIV and navigating the immigration process
- NZAF staff facilitated PLWHIV support groups in Wellington and Christchurch. A workshop was carried out for women living with HIV
- Our 'More than HIV' video series aimed at reducing HIV related stigma have been viewed over 15,000 times in the last 12 months



# Research and Science

NZAF is committed to providing HIV prevention programmes, care and support to people living with HIV based on robust scientific evidence and latest research.

## Key changes in science



Scientific breakthroughs in the last year have provided us a range of tools to stem and reverse the epidemic in New Zealand, provided we adapt them suitably as a 'combination prevention' approach. Throughout 2015 we saw some significant advances in the field of HIV treatments. These developments have informed the new additions to NZAF's Strategic Plan to incorporate new biomedical prevention technologies to help prevent HIV on all fronts.

- The START trial confirmed that starting HIV therapy immediately, regardless of CD4 count, significantly reduced adverse health related outcomes among those diagnosed with HIV, particularly among older patients.
- The PARTNERS study followed over one thousand serodiscordant partnerships over time and found that when the HIV-positive partner has an undetectable viral load, the risk of HIV transmission from this partner is significantly reduced.
- Two large international trials – IPERGAY and PROUD – have shown the high efficacy of HIV treatments as a form of HIV prophylaxis (PrEP) among HIV uninfected gay and bisexual men when the drug is taken every day.

## Sharing Knowledge



### NZ Sexual Health Conference 2015

Dr Peter Saxton, NZAF Research Fellow and Joe Rich, Marketing and Communications Manager, presented research on HIV testing and engagement among gay and bisexual men. We presented findings and learning from NZAF's response to prevent local STI outbreaks among gay and bisexual men using geo-location mobile apps.

### Workshop to Improve HIV Surveillance 2015

Dr Peter Saxton, NZAF Research Fellow, co-convened a number of conference and conducted specific workshops to develop the HIV and sexual health workforce. Among these was the 2015 Workshop to Improve HIV Surveillance in New Zealand as much of the information supplied to the organisations tracking new HIV diagnoses is provided on a purely voluntary basis.

### NZAF Library

New material has been added to the library especially in the subject areas of: 'Pre Exposure Prophylaxis (PrEP), 'intimacy', 'chemsex' / 'substance abuse', 'high risk MSM', 'virology of HIV.' Additionally, 120 new books and a number of new papers have been added to the library. NZAF's librarian Wayne Carter produced a literature review titled: Barriers and benefits to condom use, testing and PrEP among HIV-negative, highly sexualised and high risk gay and bisexual men: A literature review for the New Zealand AIDS Foundation.

## Organisational Strength

NZAF is well placed to respond to the HIV epidemic in New Zealand in a rapidly evolving HIV prevention and care landscape. We remain committed to the communities we serve in providing high quality care through prevention programmes based on scientific evidence and delivered by qualified professionals.

## Collaboration

NZAF works with organisations across New Zealand to provide high quality services and care to people living with HIV and anyone affected by HIV. We remain committed to strengthening our relationships with organisations working to ending HIV in New Zealand like Body Positive, Positive Women, INA and Te Whāiriki Takapou. In light of latest scientific developments, NZAF has liaised with clinical and medical practitioners to make the full range of bio-medical interventions available in HIV prevention accessible to our communities.

## Governance and guidance

The NZAF Board has worked with management to fully incorporate the range of bio-medical tools we now have at our disposal as we promote the goal of ending HIV transmissions within the next decade. As well as business as usual, the past year was one of transition for the NZAF. We said farewell to our Executive Director Shaun Robinson after five years in the role. The Board ran an extensive recruitment process to replace Shaun, which was led by Board member Michael Moore. More than 30 candidates applied for the role, and the Board interviewed 7 candidates before offering the role to Dr Jason Myers. The Trust Board considers it critical that the voices of the many communities affected by HIV and AIDS in New Zealand are heard at a governance level. We have appointed and co-opted members to the Trust Board in order to ensure that we have both the necessary skills and a diversity of views and experience on the Board. The Board has also been well served by its African Advisory Group, Asian Advisory Group and People Living with HIV Advisory Group, and recently formed an Interim Maori Advisory Group. The Board gratefully acknowledges the outgoing members of Te Ropu Ki a Tau o Te Waka, who have provided many years of service to the Board and the organisation.

## Our culture

Increasing collaboration has seen us drawing on the strengths and skills of internal teams to deliver focused and targeted programmes. In a time of rapid change, in HIV science and internally in the organisation, NZAF has forged ahead and revitalised its efforts towards its vision of ending HIV. Insights are actively shared between colleagues and the organisation has a highly qualified, skilled and passionate pool of professionals. Our staff survey shows that our teams are highly motivated, feel that their work is valued and understand how each team's work contributes to NZAF's mission. Staff have an understanding of how science informs our work and there is a high level of trust between teams. This makes NZAF very well placed to take on challenges of the future.

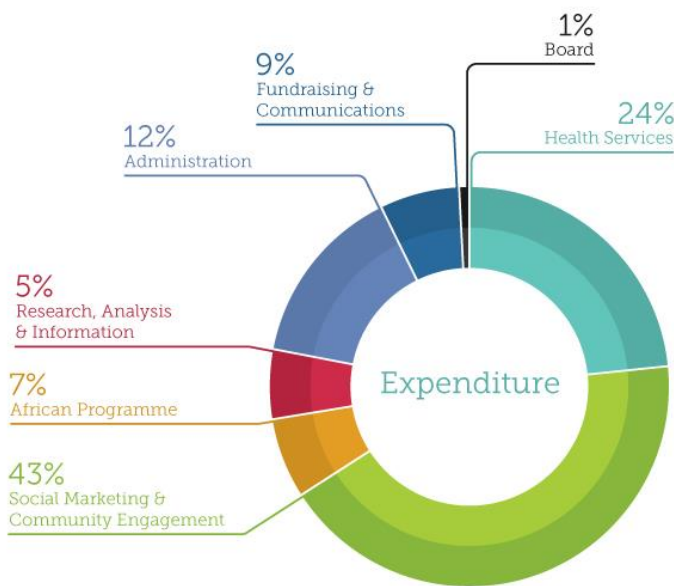
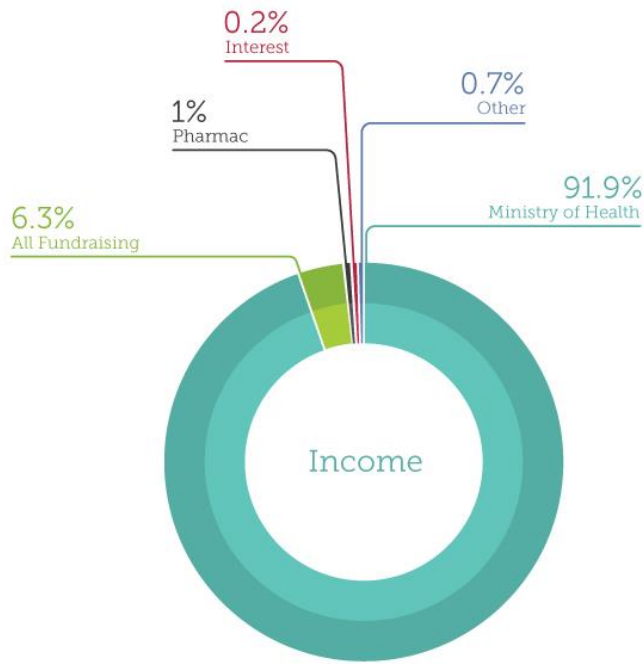
## Volunteers and community support



Without the support and commitment of dedicated volunteers, it would not be possible for us to carry out our work. From packing condoms each week to helping us fundraise by hitting the streets for our annual appeal on World AIDS Day; we remain grateful to our volunteers for their support, time and energy. Volunteers contributed a total 288 volunteer hours per week cumulatively at venues, condom packing and events.

## Fundraising and financials

Consolidation of the prior year's strategy delivered fundraising income 5% over the budget target in the 2015-16 financial year. With no inflation adjustments in Ministry of Health income for many years, successful fundraising activity is important for our sustainability. Due to improvements in our processes, grant applications to community trusts and funders were approved at a rate of 60%. Event income from LYC Big Gay Out was 9% above target, however this was offset by a 19% decline in income from the World AIDS Day street collection which suffered from bad weather and an increasingly competitive street appeal landscape. General donations and regular giving were up 67% and 59% respectively, due to the successful pilot of a tele-fundraising programme. This pilot saw monthly income from regular donors increase from \$1k to \$3k over the year and has laid the foundations for long-term growth.



Thanks to:

- Auckland Council - Albert/Eden
- Auckland Council Otara
- Papatoetoe Local Board
- Auckland Council – Regional
- Betty Campbell Grant - Wellington City Council
- Bluesky Community Trust Ltd
- COGS - Internal Affairs, Dragon Community Trust
- Durex (Reckitt Benckiser (NZ) Ltd
- DV Bryant Trust, Family Bar
- Foundation North Grants
- Four Winds Foundation
- Grassroots Trust
- Mainland Foundation
- North and South Foundation
- NZ Post
- Pelorus Trust
- Pub Charity
- Social Services Waikato - Len Reynolds trust
- The Waikato Community Trust (Trust Waikato)
- WEL Energy Trust
- Youth Town Inc.



## Statement of Comprehensive Revenue and Expenses

	2016	Restated 2015
	\$	\$
<b>Revenue from exchange transactions</b>		
Ministry of Health	4,230,387	4,200,436
Fundraising NZAF Events	17,375	21,643
Other Income	22,197	16,040
Interest	9,811	19,316
	<u>4,279,760</u>	<u>4,257,435</u>
<b>Revenue from non-exchange transactions</b>		
Grants - Special Projects	69,588	41,143
Grants - Capital	4,177	49,000
Fundraising NZAF Events	146,364	164,056
Donations/Bequests	50,902	34,944
Pharmac	45,531	45,614
Other Income	9,035	1,005
	<u>325,597</u>	<u>355,762</u>
<b>Total Revenue</b>	<b>4,605,356</b>	<b>4,593,197</b>
Office Resourcing	374,751	434,190
Board Expenses	44,488	37,936
Communications, Fundraising & Events	364,242	363,692
Depreciation	77,729	70,377
HIV Prevention	1,012,461	1,001,089
Health Services	180,453	231,731
Research Analysis & Information	61,884	64,484
Personnel	2,475,454	2,348,449
National Support Services	58,563	79,195
Travel	105,586	148,952
	<u>4,755,571</u>	<u>4,780,096</u>
<b>Total surplus/ (Deficit) for the year</b>	<b>(150,215)</b>	<b>(186,898)</b>
<b>Total Comprehensive revenue &amp; expense for the year</b>	<b>(150,215)</b>	<b>(186,898)</b>

Please Note: These financial statements should be read in conjunction with the notes to the financial statements.

## Statement of Changes in Net Assets

	2016	Restated 2015
	\$	\$
<b>Accumulated comprehensive revenue &amp; expense</b>		
Opening balance at start of year 01 July	1,709,088	1,704,906
Net surplus / (deficit) for the year	(150,215)	(186,898)
Transferred (to) / from Research Reserves for the year	50,000	49,680
Transferred (to) / from Building Reserve for the year	-	126,500
Transferred (to) / from Ministry of Health reserve for the year	(9,000)	15,000
Total recognised revenue and expense	<u>(109,215)</u>	<u>4,282</u>
<b>Total closing equity at the end of year 30 June</b>	<b>1,599,873</b>	<b>1,709,088</b>
<b>Building Reserve</b>		
Total Building Reserve at the start of year	-	126,500
Transferred from Accumulated Funds for the year	-	-
Payments for the year	-	(126,500)
<b>Total Building Reserve at the end of year</b>	<b>-</b>	<b>-</b>
<b>Research Reserves</b>		
Total Research Reserves at the start of year	73,920	123,600
Transferred from Accumulated Funds for the year	-	-
Bequest Research Reserve received for the year	-	320
Payments for the year	(50,000)	(50,000)
<b>Total Research Reserve at the end of year</b>	<b>23,920</b>	<b>73,920</b>
<b>Ministry of Health Reserve</b>		
Total Ministry of Health Reserves at the start of the year	51,000	66,000
Transferred (to) / from Accumulated Funds for the year	9,000	(15,000)
Payments for the year	-	-
<b>Total Ministry of Health Reserve at the end of year</b>	<b>60,000</b>	<b>51,000</b>
<b>Closing equity 30 June</b>	<b>1,683,739</b>	<b>1,834,008</b>

The NZAF would like to thank RSM Hayes Audit for their audit services.

## Statement of Financial Position

	<i>Restated</i>	
	2016	2015
	\$	\$
<b>Current Assets</b>		
Cash & Cash equivalents	37,986	28,616
Investments	-	-
Receivables from exchange transactions	-	-
Receivables from non-exchange transactions	1,150	-
Prepayments	13,785	48,635
GST Receivable	47,646	54,751
	<u>100,567</u>	<u>132,002</u>
<b>Non-Current Assets</b>		
Property, Plant & Equipment	2,293,361	2,433,752
Intangible Assets	15,901	11,614
	<u>2,409,162</u>	<u>2,445,366</u>
<b>Total Assets</b>	<u>2,509,729</u>	<u>2,577,368</u>
<b>Current Liabilities</b>		
Trade & other creditors from exchange transactions	207,242	202,584
Employee entitlements	83,793	87,380
Accrued expenditure	22,088	88,325
Income in Advance - Operational Grants	12,813	15,070
ANZ Bank Loan	500,000	350,000
	<u>825,935</u>	<u>743,360</u>
<b>Total Liabilities</b>	<u>825,935</u>	<u>743,360</u>
<b>Net Assets</b>	<u>1,683,793</u>	<u>1,834,008</u>
<b>Equity</b>		
Accumulated comprehensive revenue and expense	1,599,873	1,709,088
Building Reserve	-	-
Research Reserves	23,921	73,920
Ministry of Health Reserve	60,000	51,000
	<u>1,683,793</u>	<u>1,834,008</u>
<b>Total</b>	<u>1,683,793</u>	<u>1,834,008</u>

## Cash Flow Statement

	2016	2015
	\$	\$
<b>Cash flows from operating activities</b>		
Receipts		
Ministry of Health	4,230,387	4,200,436
Fundraising NZAF Events	163,739	185,699
Donations & Grants	121,260	128,986
Interest	9,811	19,216
Other Income	76,753	62,659
Net GST Received	7,105	-
	<u>4,609,054</u>	<u>4,597,095</u>
Payments		
Suppliers	2,135,900	2,277,694
Employees	2,548,958	2,328,247
Interest Paid	23,359	18,963
Net GST Paid	-	1,949
	<u>4,708,017</u>	<u>4,626,854</u>
<b>Net cash flow/(out flow) from operating activities</b>	<u>(98,963)</u>	<u>(29,758)</u>
<b>Cash flows from financing activities</b>		
Receipts		
Funds received from borrowings	150,000	250,000
	<u>150,000</u>	<u>250,000</u>
<b>Net cash flow/(out flow) from financing activities</b>	<u>150,000</u>	<u>250,000</u>
<b>Cash flows from investing activities</b>		
Payments		
Purchase of fixed assets	41,667	242,208
	<u>41,667</u>	<u>242,208</u>
<b>Net cash flow/(out flow) from investing activities</b>	<u>41,667</u>	<u>242,208</u>
<b>Net increase / (decrease) in cash &amp; cash equivalents</b>	<u>9,370</u>	<u>(21,966)</u>
Cash & cash equivalents at 01 July	28,616	50,582
<b>Cash &amp; cash equivalents at 30 June</b>	<u>37,986</u>	<u>28,616</u>

Please Note: These financial statements should be read in conjunction with the notes to the financial statements.